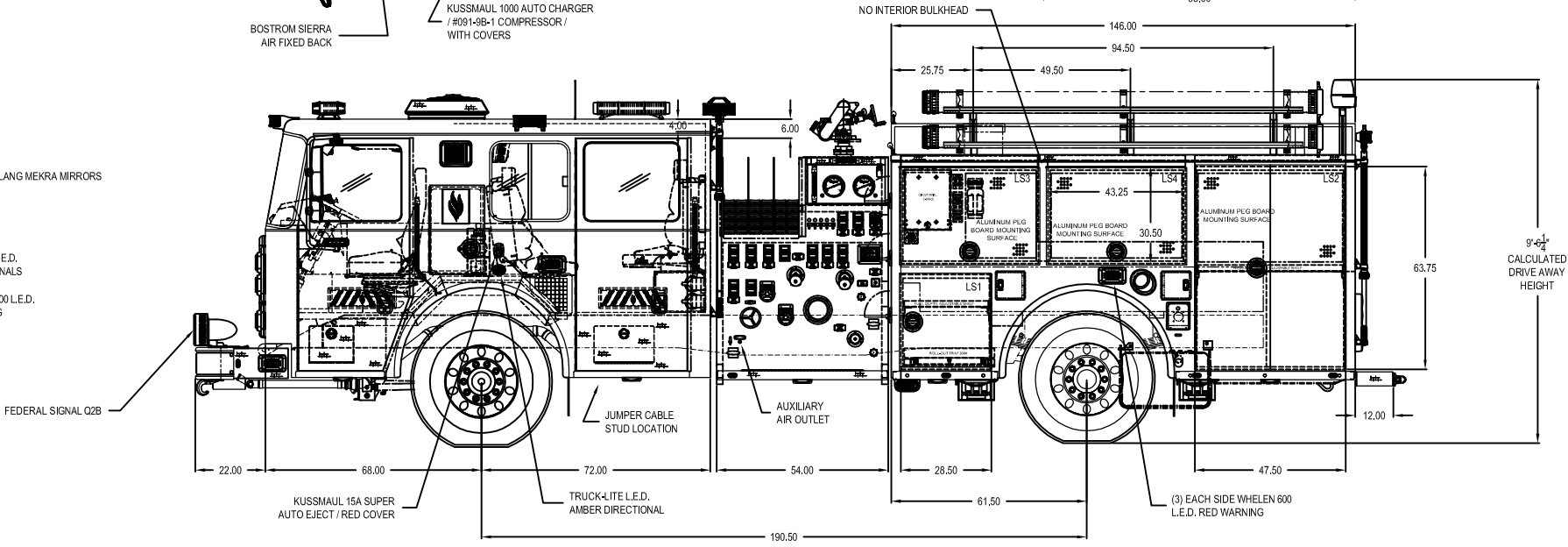
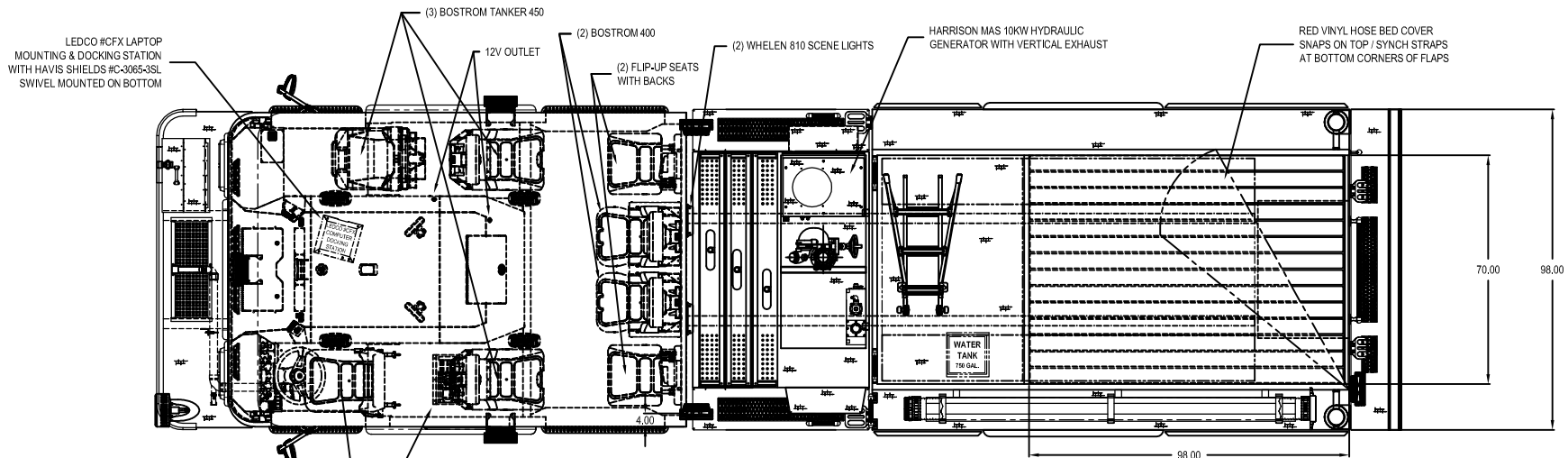
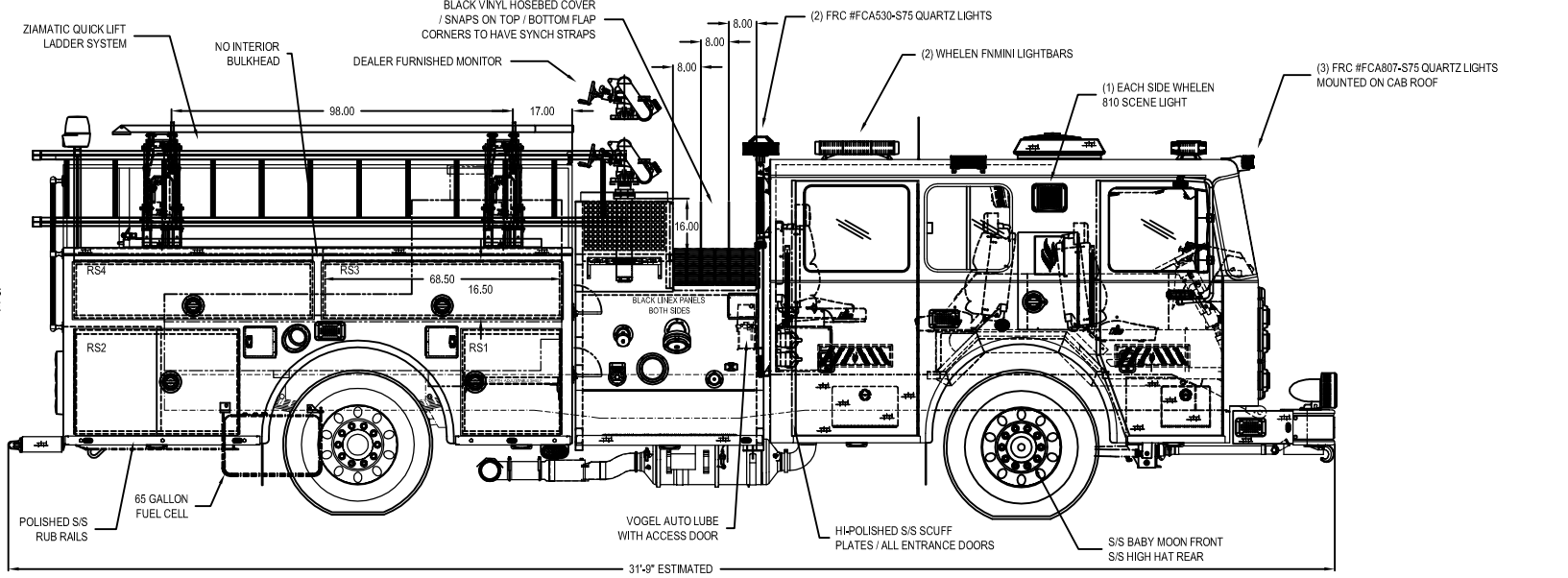
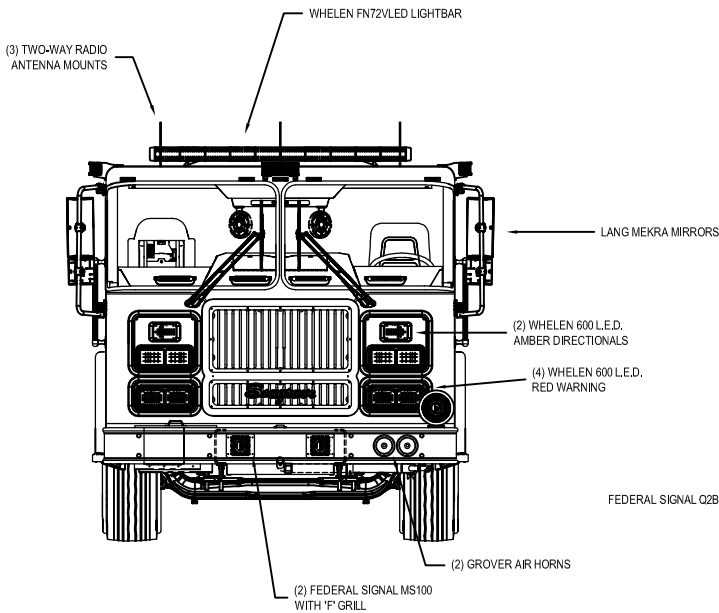
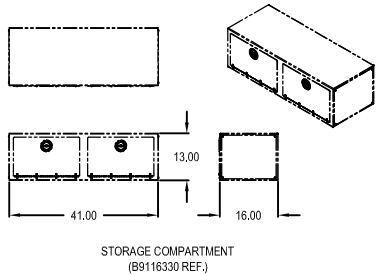
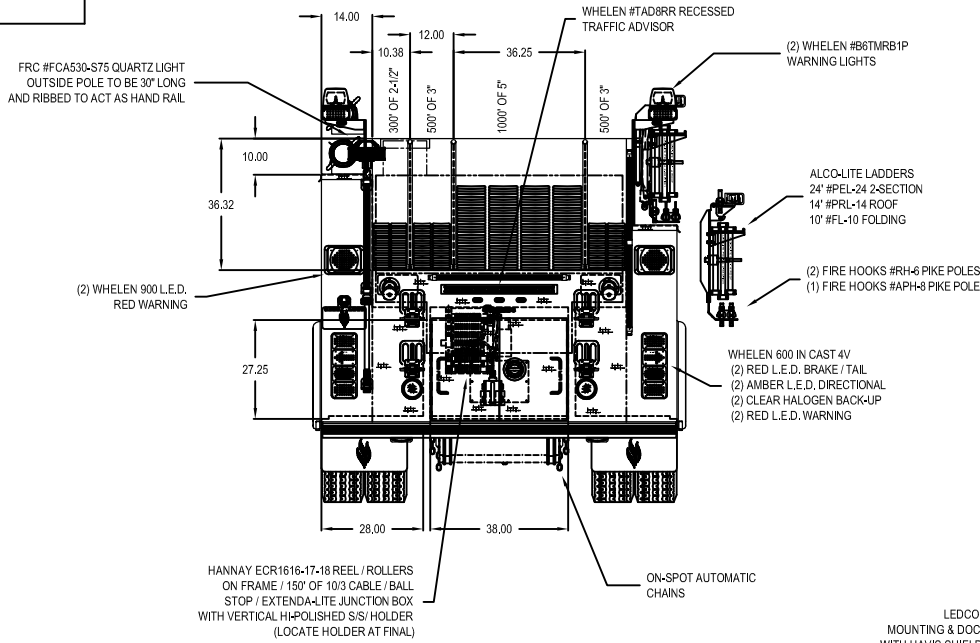


APPROVED



THE INDICATED VEHICLE HEIGHT REPRESENTS A CALCULATED DIMENSION. THE ACTUAL HEIGHT OF THE UNIT AS SHIPPED FROM THE FACTORY MAY VARY.

DIMENSIONS SHOWN ARE APPROXIMATE AND SUBJECT TO MINOR DEVIATIONS AS MAY OCCUR DURING CONSTRUCTION.

WHERE NONCONFORMITY EXISTS BETWEEN THE ILLUSTRATION AND THE SALES ORDER, THE SALES ORDER AND ALL APPROVED SALES CHANGE ORDERS WILL PREVAIL.

THE HOSE CAPACITY IS A CALCULATED AMOUNT. THE ACTUAL CAPACITY MAY VARY DEPENDING ON THE STYLE AND VENDOR OF THE HOSE

REV.	DATE	DESCRIPTION
5	29 SEPT 09	UPDATED PER S.O.C. E / FINAL INSPECTION
4	5 JUNE 09	UPDATED PER S.O.C. C
3	15 MAY 09	UPDATED PER S.O.C. B
2	06 APRIL 09	UPDATED PER S.O.U. #1 REV. 1 / INITIAL RELEASE
1	25 MAR 09	UPDATED PER S.O.U. #1 FROM PRE-CONSTRUCTION MEETING

AERIAL: N/A	R. LAMBRECHT	PUMP: HALE QMAX 1500 GPM	REVISED BY:
FOAM: N/A	R. LAMBRECHT	BODY STYLE: SPECIAL 146	
WATER: 750 GALLONS	R. LAMBRECHT	BODY MATERIAL: 3CR12 S/S	
	R. LAMBRECHT	ENGINE: SERIES 60 455HP-W/DPF	
	R. LAMBRECHT	CAB: M11 140	
		UNIT DESCRIPTION	

APPROVED		
APPROVAL SIGNATURE:		
APPROVAL DATE:		
PREPARED BY:	RAY LAMBRECHT	2/5/2009
REVIEWED BY:	BOBBI SCHMIDT	3/28/2009
SALES ADMINISTRATOR:		
FWD / SEAGRAVE CORPORATION RESERVES PROPRIETRY RIGHTS TO THIS DRAWING AND THE DATA SHOWN THEREON. SAID DRAWING AND/OR DATA ARE CONFIDENTIAL AND ARE NOT TO BE USED OR REPRODUCED FOR ANY PURPOSE WITHOUT THE WRITTEN CONSENT OF FWD / SEAGRAVE CORPORATION.		

Seagrave		Seagrave Fire Apparatus, LLC 105 East 12th Street Clintonville, Wisconsin 54929			
DEPARTMENT:		VILLAGE OF SUFFERN FIRE DEPARTMENT SUFFERN, NEW YORK			
DEALER:		CARL LAMBIASI EXCELSIOR FIRE EQUIPMENT SALES		SALES ORDER NO.: 78F76	
MODEL NO.: TB-50-DA				SHEET 1 OF 1	